



# Sage Fixed Assets 2022.0

## Release Notes

October 2021

© 2021 The Sage Group plc or its licensors. All rights reserved. Sage, Sage logos, and Sage product and service names mentioned herein are the trademarks of The Sage Group plc or its licensors. All other trademarks are the property of their respective owners.

# Contents

- Features..... 3**
- Import asset disposal information\* ..... 4
- Display totals on numeric columns in the Asset List\* ..... 5
- One Step Product Registration and Activation ..... 5
  
- Enhancements ..... 6**
- Sage Fixed Assets Scanner v2.0\* ..... 6
- Advanced Search options in Help ..... 7
- Export Asset List to Excel® ..... 8
- New drag-and-drop capability\* ..... 9
- Simplified calculation on Disposals for Depreciation This Run \* ..... 9
- Browse For Folder enhancement\* ..... 10
  
- Defect Fixes ..... 11**
- Folder box not present when browsing for New Database location ..... 11
- Bulk Edit incorrect message ..... 11
- Delete/Link in Image Manager does not apply to the currently open asset ..... 11
- Unable to connect to OneDrive when performing an inventory ..... 11
- Reset OneDrive Login missing from Receive Reader Data window ..... 11
  
- Crystal Reports compatibility ..... 12**
- Resolution ..... 12

❖ This feature or enhancement originated from a customer suggestion. See [Sage City: Ideas](#) to vote on and requests.

# Features

In this release, Sage is excited to announce the addition of the following new features. Refer to the table below to see which features apply to your Sage Fixed Assets products.

Products	Features		
	Import disposal information*	Total numeric columns	One Step Registration and Activation
Sage Fixed Assets—Depreciation (Premier, Network, and Standard)	✓	✓	✓
Sage Fixed Assets—Lite Depreciation			✓
Sage Fixed Assets—Tracking (Premier, Network, and Standard)			✓
Sage Fixed Assets—Planning (Premier, Network, and Standard)			✓

\*Subscription plans only

# Import asset disposal information

Subscription plans only

Easily import disposal information for multiple assets using custom import. Now hundreds of items can be fully disposed of in minutes.

### Custom Import Helper

The Custom Import Helper guides you through the process of importing asset data from an Excel spreadsheet or CSV (ASCII) file into the system. 🏠 ?

- 1 Welcome
- 2 Select File
- 3 Select Company
- 4 Import Type
- 5 Field Map
- 6 Select Fields**
- 7 Import

Using the preview of the import file as a guide, create the field map. First, select a column, then select the system field that matches this column in the import file, and click the Add button.

Choose Books:

- Tax
- Internal
- State
- AMT
- ACE
- Budget 1
- Budget 2

Columns:

- A
- B
- C
- D
- E
- F
- G
- H

Field Category:

Disposal Fields

Field Mapping:

- [A] System Number
- [B] Disposal Date
- [C] Disposal Method
- [D] Cash Proceeds
- [E] Non Cash Proceeds
- [F] Expense of Sale

Available Fields:

>>
<<

Select All   Unselect All

Print Map
Save Map

File Display:

	A	B	C	D	E	F	G	H		
1	System Nu...	Disposal Date	Disposal Me...	Cash Proce...	Non-Cash P...	Expenses o...				^
2	111	07/01/2022	S	1000.00	0.00	50.00				
3	222	07/02/2022	A	4700.00	2500.00	110.00				
4	333	07/03/2022	C	2000.00	50.00	0.00				
5	444	07/04/2022	R	1500.00	0.00	100.00				v

Begin import at row:

Cancel   <<Back   Next>>   Import

## Display totals on numeric columns in the Asset List

View totals of numeric fields for a group of assets on screen in the Asset List.

Group: Only Active \*\*Tax Book: Assets in Group: 3424

All	Sys No	Status	Desc	Class	In Svc Date*	Acquired Value*	Thru Date*	NBV*	Expense G/L
	4009	Active	Office Renovations	04	03/01/2012	\$1,000.00	03/31/2012	\$985.71	6600
	4008	Active	Office Furnishings	04	03/01/2012	\$6,833.45	03/31/2012	\$6,735.83	6603
	4007	Active	Desktop Hardware and Software	04	03/01/2012	\$1,302.55	03/31/2012	\$1,276.50	6603
	4006	Active	Drainage	03	03/01/2012	\$5,380.00	03/31/2012	\$5,353.10	6600
	4005	Active	...	03	03/01/2012	...	...	...	...
	3996	Active	Refrigerator	04	11/01/2011	\$1,363.11	03/31/2012	\$1,084.92	6600
	3995	Active	Range/Stove	04	11/01/2011	\$1,050.30	03/31/2012	\$835.95	6600
	3994	Active	Ceiling Fans	04	11/01/2011	\$841.81	03/31/2012	\$670.01	6600
	3993	Active	Interior Light Fixtures	04	11/01/2011	\$959.16	03/31/2012	\$763.41	6600
	3992	Active	Doors	03	11/01/2011	\$2,870.00	03/31/2012	\$2,843.09	6600
Σ Asset List totals: Double-click in this area under currency columns for totals.						<b>Total: \$81,617,075.26</b>	<b>Total: \$29,900,062.60</b>		

Record 1 of 3424

Asset Detail | Print Asset List | Export to Excel | Row height:  |  Include font size |  Σ Enable Asset List totals | Help

New

New

## One Step Product Registration and Activation

20-digit Activation Codes and Unlock Codes (subscription) no longer need to be entered to register and activate your product. Sage Fixed Assets products can now pull your registration information with only your customer number and serial number.

### Product Registration

**Register** ?

Enter your Sage Customer and Serial Number activate your licensed products.

For Subscription licenses, click Activate to register or update your registration with internet access. Click Enter Code to activate manually.

For more information, contact your Sage Account Manager at 1-800-368-2405.

Customer Number:

10-digits starting with 40

Serial Number:

9 digits: 1234-56789

## Enhancements

With this release, Sage made the following enhancements. Refer to the table below to see which enhancements apply to your Sage Fixed Assets products.

Products	Enhancements					
	SFA Scanner v2.0	Advanced help search	Export Asset List to Excel	Drag-and-drop	Disposals DTR calc	Browse for Folder window
Sage Fixed Assets— Depreciation (Premier, Network, and Standard)		✓	✓	✓	✓	✓
Sage Fixed Assets Lite Depreciation, Lite Depreciation for Sage 50, and Sage 50 Fixed Assets		✓	✓		✓	✓
Sage Fixed Assets— Tracking (Premier, Network, and Standard)	✓	✓		✓		✓

### Sage Fixed Assets Scanner v2.0 <sup>❖</sup>

The Sage Fixed Assets Scanner app for Android has the following updates:

- Integrated with Unitech built-in scanner <sup>❖</sup>
- Increased space between the edit, upload, and trash icons on the asset list to select the correct option more accurately <sup>❖</sup>
- Chat with support directly through the app
- Available October 2021 in the Google Play Store

## Advanced Search options in Help

Answers are now easier to find in Help with the addition of logical search terms and filters. Results are listed by rank. Click on the Title header to sort alphabetically.

The screenshot displays the Sage Fixed Assets Help search interface. At the top, there are navigation icons: Hide, Back, Forward, Home, Font, and Print. Below these are tabs for Contents, Index, and Search. A search bar contains the text 'posting'. Below the search bar are buttons for 'List Topics' and 'Display'. A table of search results is shown, with columns for Title, Location, and Rank. The results are sorted by rank, with the top result being 'General Ledger Postin...' with rank 1. A dropdown menu is open over the search results, showing options: AND, OR, NEAR, and NOT. To the right of the search results is a 'More information' section with several links, each preceded by a question mark icon. Below this is a 'More resources' section with a link to 'Sage Support' and a tooltip that says 'Click to select or unselect all assets in the list.' At the bottom left, there are three checkboxes: 'Search previous results' (unchecked), 'Match similar words' (checked), and 'Search titles only' (checked).

Hide Back Forward Home Font Print

Contents Index Search

Type in the word(s) to search for:

posting

List Topics Display

Select topic: Found: 8

Title	Location	Rank
General Ledger Postin...	Sage Fixed A...	1
Choosing the Depreci...	Sage Fixed A...	2
Like-Kind Exchange: ...	Sage Fixed A...	3
Post Recovery Adjust...	Sage Fixed A...	4
General Ledger Postin...	Sage Fixed A...	5
Involuntary Conversio...	Sage Fixed A...	6
General Ledger Postin...	Sage Fixed A...	7
General Ledger Postin...	Sage Fixed A...	8

AND  
OR  
NEAR  
NOT

### General Ledger Posting Date

...s used to post to my general

Posting Date field to specify the end of the  
which you want to post depreciation

Use the **Journal Entry Date** field to specify the date on  
which you want to post the transaction in your general  
ledger program. The default date is the system date; generally, this is the date that you are completing  
the window. However, you can change this date if you want.

Example: ⓘ

#### More resources

For additional online resources for Sage products, visit [Sage Support](#) where you can add [Click to select or unselect all assets in the list.](#)  
chat, or enter a customer support case.

Search previous results  
 Match similar words  
 Search titles only

#### More information

- [Sage Fixed Assets Link Process](#)
- [Entering G/L Account Numbers](#)
- [Calculating Depreciation Before Running the Sage Fixed Assets Link](#)
- [Running a Sage Fixed Assets Link](#)
- [Selecting a Favorite Sage Fixed Assets Link](#)

## Export Asset List to Excel®

Lists of assets exported to file using the Export to Excel feature now display a frozen header row for convenient reference while scrolling. In addition, a new total row sums numeric columns.

### Before

	A	B	C	D	E	F	G
1	Sys No	Description	Quantity	In Svc Date*	Location	Est Life*	Acquired Value*
2	60	BMW X6	1	01/06/2018	SL	05 yrs 00 mos	\$80,000.00
3	62	Ladder	2	04/12/2018	MG	05 yrs 00 mos	\$500.00
4	63	Paper Cutter	1	05/28/2018	SL	05 yrs 00 mos	\$286.00
5	64	Industrial Paper Shredder	1	05/29/2018	SL	05 yrs 00 mos	\$320.00
6	65	Dishwasher	1	06/04/2018	HQ	05 yrs 00 mos	\$1,200.00
7	66	Corporate Building	1	06/04/2018	HQ	39 yrs 00 mos	\$4,000,000.00
8	67	US Copyright #2511028161901	1	06/04/2018	HQ	05 yrs 00 mos	\$15,000.00
9	70	Roof	1	06/23/2019	HQ	39 yrs 00 mos	\$9,000.00
10							

### After

	A	B	C	D	E	F	G
1	Sys No	Description	Quantity	In Svc Date*	Location	Est Life*	Acquired Value*
2	60	BMW X6	1	01/06/2018	SL	05 yrs 00 mos	\$80,000.00
3	62	Ladder	2	04/12/2018	MG	05 yrs 00 mos	\$500.00
4	63	Paper Cutter	1	05/28/2018	SL	05 yrs 00 mos	\$286.00
5	64	Industrial Paper Shredder	1	05/29/2018	SL	05 yrs 00 mos	\$320.00
6	65	Dishwasher	1	06/04/2018	HQ	05 yrs 00 mos	\$1,200.00
7	66	Corporate Building	1	06/04/2018	HQ	40 yrs 00 mos	\$4,000,000.00
8	67	US Copyright #2511028161901	1	06/04/2018	HQ	05 yrs 00 mos	\$15,000.00
9	70	Roof	1	06/23/2019	HQ	39 yrs 00 mos	\$9,000.00
10	<b>Total =</b>		<b>9</b>				<b>\$4,106,306.00</b>
11							



## New drag-and-drop capability

These screens now have drag-and-drop capability to easily reorder or move fields.

- Customize Asset List (*Depreciation*)
- Batch Reports (*Depreciation*)
- Inventory Helper (*Tracking*)
- Global Task Manager (*Premier Depreciation*)

Sage Fixed Assets - Depreciation

### Customize Asset List

Select the fields to display on Asset List. System Number must be the first field. Use drag and drop or the directional buttons.

Available Fields:

- 168 Allowance Amount \*
- Acquisition Date
- Cap/Exp
- CIP Reference No
- Current Through Date \*
- Current YTD \***
- Custom Field 4
- Custom Field 5
- Custom Field 6
- Custom Field 7
- Custom Field 8
- Custom Field 9
- Depreciation Method \*
- Depreciation This Run \***
- Estimated Life \*
- GA Accum Asset

Selected Fields:

- Sys No
- Status
- Asset ID
- Description
- Location
- Department
- Class
- Placed in Service Date
- Acquisition Value \*
- Current Accum \*
- Net Book Value \*
- HasNote
- HasImage

**Bold** =  $\Sigma$  Summable field

\* Select book: Tax

$\Sigma$  Sum the selected field(s) when Asset List totals are enabled

> [Will displaying book fields affect Asset List performance?](#) Restore Defaults OK Cancel

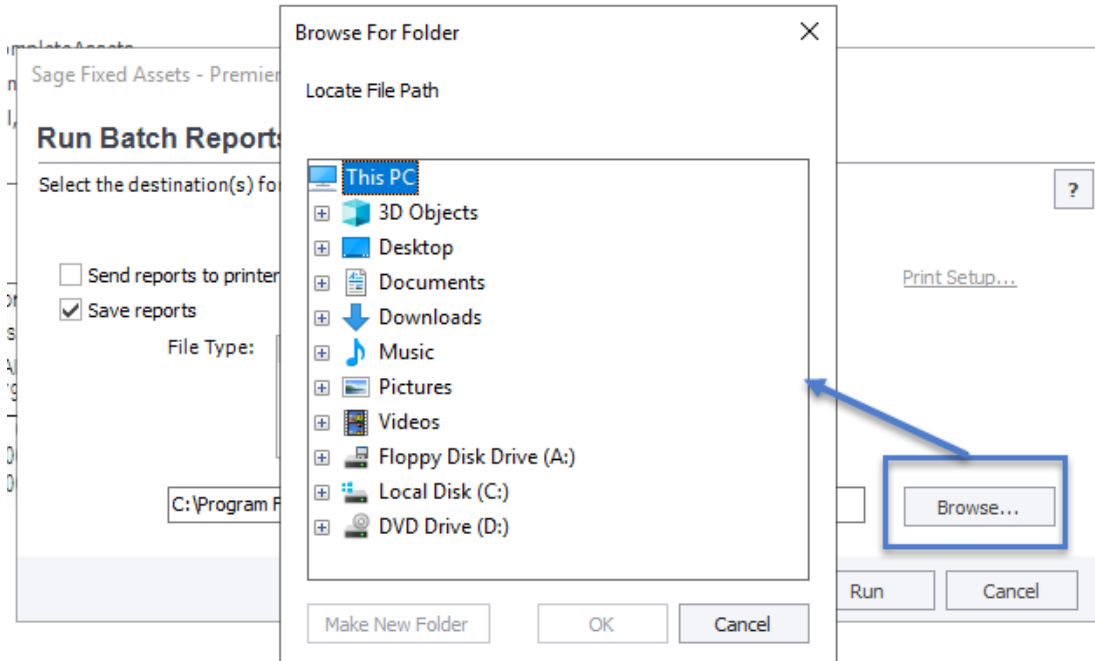
## Simplified calculation on Disposals for Depreciation This Run

Whether disposals are entered before or after running depreciation for the current period, the correct depreciation-this-run is calculated. This saves time by not having to recalculate depreciation for disposed assets.

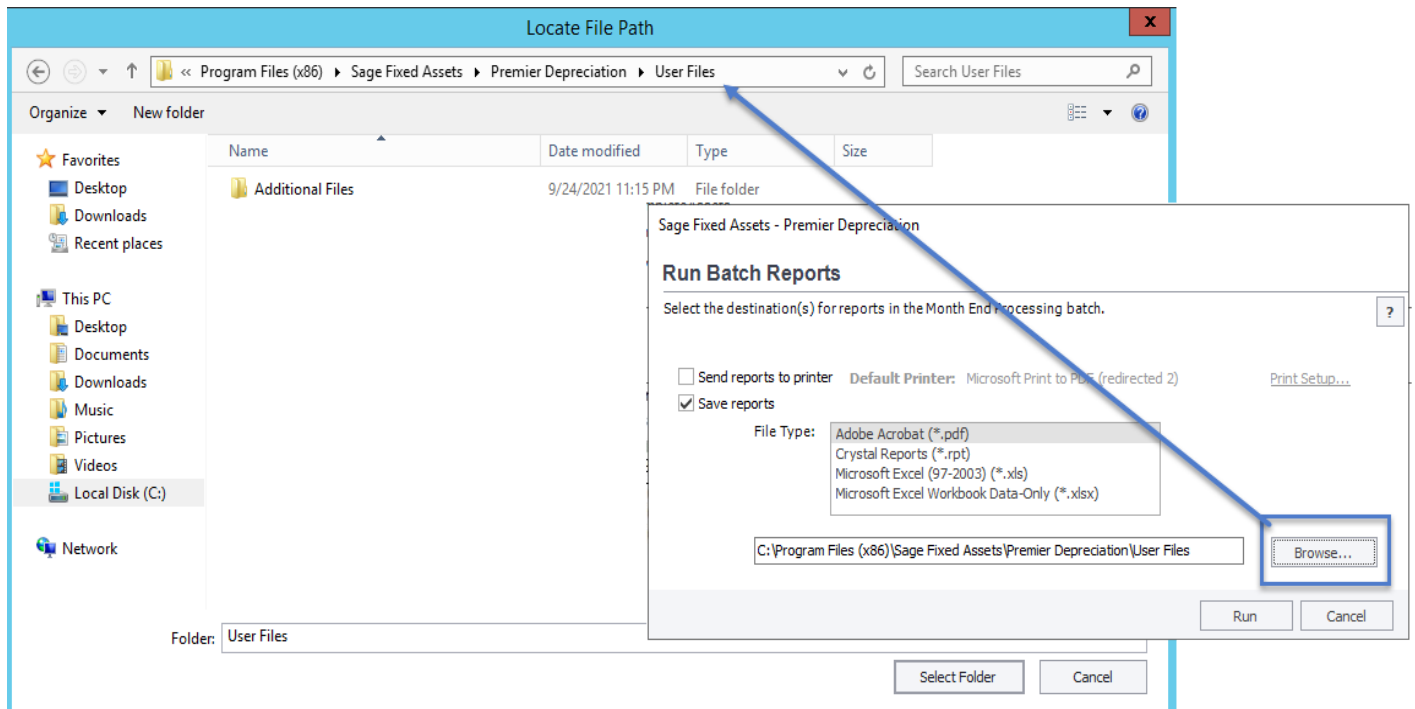
## Browse For Folder enhancement

Quickly find the folder you are looking for with the updated Browse For Folder window. Browse now opens to the specified location and allows typing or pasting to find the preferred path.

### Before



### After



## Defect Fixes

With this release, Sage made the following defect fixes to the indicated Sage Fixed Assets products. Fixes with no specific product notation apply to all products that include the feature.

### Folder box not present when browsing for New Database location

Fixed an issue where the folder box did not display on the Browse for Folder window when creating a new database.

### Bulk Edit incorrect message

*Sage Fixed Assets—Depreciation (Premier, Network, and Standard)*

When performing a Bulk Edit with an Effective Date of the Current Thru Date (CTD) on an asset that has a Begin Date equal to the CTD, the validation report will no longer incorrectly display an “Asset is fully depreciated” message.

### Delete/Link in Image Manager does not apply to the currently open asset

*Sage Fixed Assets—Depreciation, Tracking (Premier, Network, and Standard)*

Fixed an issue where an image that is linked or deleted while in the Image Tab of Asset Detail does not show as linked or deleted until exiting and returning to the asset.

### Unable to connect to OneDrive when performing an inventory

*Sage Fixed Assets—Tracking (Premier, Network, and Standard)*

Fixed occasional issues where connections to OneDrive failed.

### Reset OneDrive Login missing from Receive Reader Data window

*Sage Fixed Assets—Tracking (Premier, Network, and Standard)*

Fixed an issue where the Reset OneDrive Login checkbox is missing from the Receive Reader Data window.

## Crystal Reports compatibility

Sage Fixed Assets 2018.1 through 2022.0 use SAP Crystal Reports runtime SP21. This may cause an issue with older Crystal Reports runtime versions used by other products.

You may experience a compatibility issue after upgrading to Sage Fixed Assets 2022.0 if you are also using Sage 100 (2017 and earlier), Sage 300 CRE (v18.1 and earlier), or Sage 500 (2018 and earlier).

### Resolution

If you are unable to run reports in one of these products after installing Sage Fixed Assets 2022.0, select the appropriate link for your product below to open the Knowledgebase article for steps to resolve the issue:

- [Sage 100 \(2017 and earlier\)](#)
- [Sage 300 CRE \(v18.1 and earlier\)](#)
- [Sage 500 \(2018 and earlier\)](#)

If you are unable to run reports in Sage Fixed Assets 2022.0, review Sage Knowledgebase [article 89033](#) to resolve the issue.